

What is the TransBleph Direct Brow Lift Procedure?

The TransBleph procedure is a revolutionary new approach to upper eyelid rejuvenation that is simple, quick and highly effective. It enables your physician to simultaneously elevate and shape your eye brow (brow lift) and, if necessary, remove excess eyelid tissue (blepharoplasty) through a single small incision hidden in a fold of your eyelid skin.

Patient of Mary Szatkowski, MD – Chicago, IL



Before

After

What is Upper Eyelid Rejuvenation?

As the upper face ages, the brow often begins to droop. When this occurs, excess eyelid tissue gathers in folds above the lid, creating a tired, worn-down effect. A blepharoplasty removes excess skin, but does not correct the sagging brow. The TransBleph procedure can combine a blepharoplasty with a browlift for a more complete upper eyelid rejuvenation - unwanted tissue is removed and brow elevation is restored creating a more youthful, relaxed and refreshed appearance.

Am I a TransBleph Candidate?

If you are undergoing upper eyelid surgery for cosmetic or optical reasons and would like the refreshed appearance of a brow lift without a second set of incisions, then a TransBleph procedure may be for you.

To get a glimpse of the potential results, you can try a simple test on your own. Place your fingertips at the outer one-third of your eyebrows and gently raise the skin upwards. This will give you a good indication of what the procedure might do for your appearance.

Even if you don't need upper eyelid surgery but do want the refreshed appearance of a subtle brow lift, then the TransBleph procedure is still an option. Of course, the best way to determine if TransBleph is right for you is by a thorough consultation with your cosmetic surgeon.

How is a TransBleph performed?

The transbleph procedure is typically performed under local anesthesia and can be completed in sixty minutes or less. Beginning with the blepharoplasty, the surgeon makes an incision in the crease of your upper lid and removes excess fat, skin and sometimes muscle. The surgeon will



The TransBleph Difference

then release and lift the brow, securing it to the bone with the use of a new, absorbable implant called the ENDOTINE TransBleph fixation device.



The Endotine provides reliable, predictable fixation until healing is complete, and then it is absorbed naturally by the body. The surgeon will then close the incision using very fine sutures.

Endotine TransBleph

Patient of Richard A. Weiss, MD— Newport Beach, CA



Before:
Patient in mid forties suffering from drooping brow.

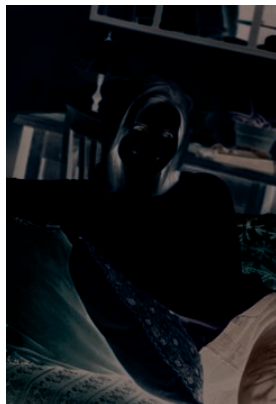
After:
Brow re-elevated, and obstructed vision corrected for a more youthful look.

“The Endotine helped create a natural cosmetic improvement that increased patient satisfaction.”

Richard A. Weiss, MD

Tell Me More about the ENDOTINE TransBleph Fixation Device

The ENDOTINE TransBleph device offers a novel and elegant solution designed specifically for elevating the brow. Its unique structure, using “tines”, provides multiple points of contact with the elevated brow tissue in order to create a more even and gentle



distribution of tension. Other options, such as screws and sutures, typically provide only one point of contact, which may stretch or tear through the soft tissues, adversely affecting brow reliability.

The tips of the tines create a secure grasping surface for the brow tissue. Current clinical data indicate that while patients can feel the tines when they push down on them, most patients experience little or no tenderness. Any tenderness is resolved over time as the device is absorbed. Perhaps most importantly, doctors report a very high level of satisfaction with their results.*

One of the key advantages of this device is that during surgery your surgeon has the ability to easily re-adjust brow height and shape for optimal correction and position. This ensures that your result is the ideal result for you.

**Data on file.*

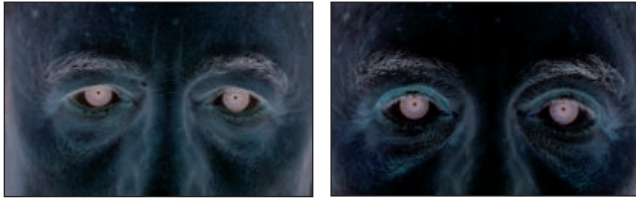
Advantages of an ENDOTINE TransBleph Brow Lift

- ✓ Single incision for both blepharoplasty and browlift
- ✓ Excellent aesthetic control of brow elevation
- ✓ Simple and quick for the doctor to perform
- ✓ No need for removal, since the ENDOTINE TransBleph device absorbs over time

What Can I Expect After Surgery?

Immediately after surgery, you will experience some temporary swelling and bruising in your brow area, which may take several weeks to completely resolve. The first night, it's important to rest with your head elevated to decrease swelling and bruising. You can use a cold compress for comfort and to help control swelling. Additionally, pain medication may be prescribed for post-operative pain. If you're like most direct brow lift patients, you'll be very pleased with

Patient of Amjad Ahmad, MD – Maywood, IL



Before:

Significant hooding of upper eyelid obstructing vision

After:

Brow elevated, hooding corrected, full vision restored

your refreshed appearance. Although it may take several weeks or months to see the final results, you'll probably agree that your new look was worth the wait.

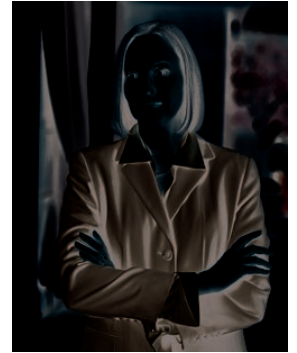
The length of time your brow lift lasts will vary. A number of factors, including heredity and lifestyle, all play a role in your long-term results. Although you will appear younger, remember that you are still continuing to age. In the future, you may also want to make additional surgical improvements.

"This procedure is ideal for patients desiring cosmetic improvement and for patients who need visual field correction."

Amjad Ahmad, MD

What Are the Surgical Risks?

Each year, thousands of men and women who undergo blepharoplasties and brow lift procedures experience no complications. Although problems are rare, and usually minor, it's best to discuss possible complications with your surgeon. And, remember that you can help minimize risks by following the advice and instructions you received from your health care professional, both before and after surgery.



"I think it's worth paying a little more for the Endotine... especially given the alternatives,"

Pamela, Age 42

Possible Risks Associated with the Direct ENDOTINE TransBleph Brow Lift

Although the ENDOTINE TransBleph device is designed for brow lift surgery, it's important to understand that there are potential risks inherent in this (and all) brow lift procedure(s). For example, you may experience some initial discomfort, regardless of the method used, and you may be able to feel the ENDOTINE TransBleph device under the forehead skin, which may be sensitive to touch. The ENDOTINE TransBleph device is designed to minimize the risk of injury to bodily structures in the surgical area, although they are at risk with any technique. Should problems specifically associated with the ENDOTINE TransBleph device occur, you and your surgeon may decide to remove it rather than wait for it to dissolve.

Information contained in this brochure is intended to provide you with a better understanding of the midface suspension procedure. This is not intended as a substitute for medical advice. The best way to get complete information and answers to your specific questions is through a personal consultation with your surgeon.